

### SPECIFICATION

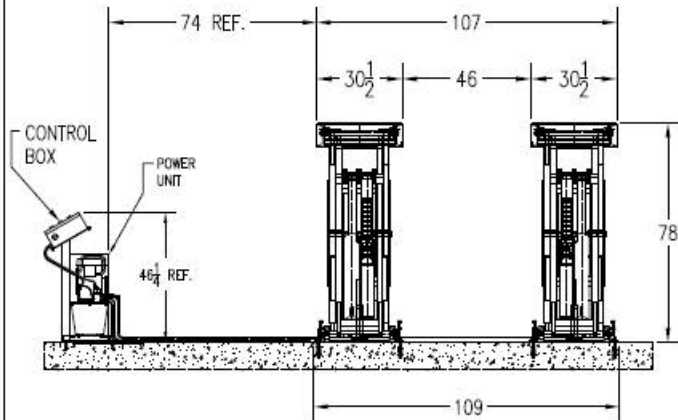
SCISSOR LIFT MODEL: SC30 HYDRAULICALLY EQUALIZED  
 CAPACITY 30,000LBS  
 TWO SCISSORS POSTS C/W FOUR HYDRAULIC CYLINDERS  
 TWO SAFETY DEVICES ON EACH POST (MECHANICAL/AIR)

POWER UNIT C/W EL. MOTORS P/U W/P 3450 PSI	STANDARD	5HP, 3PH, 230/460V
	OPTIONAL	5HP, 3PH, 575V
	OPTIONAL	5HP, 1PH, 230V

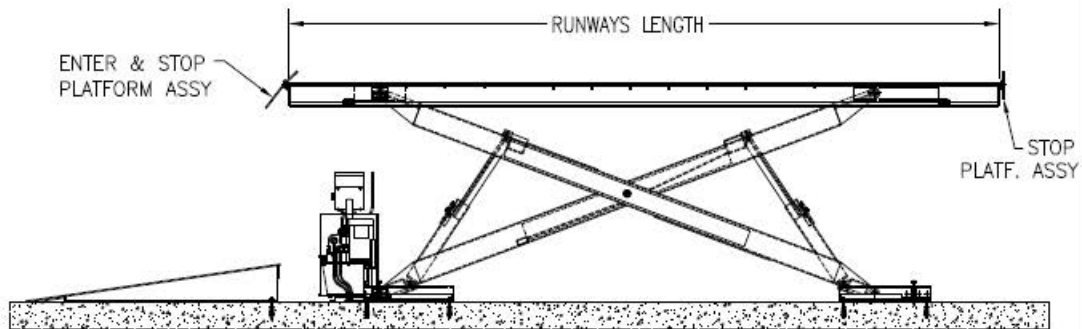
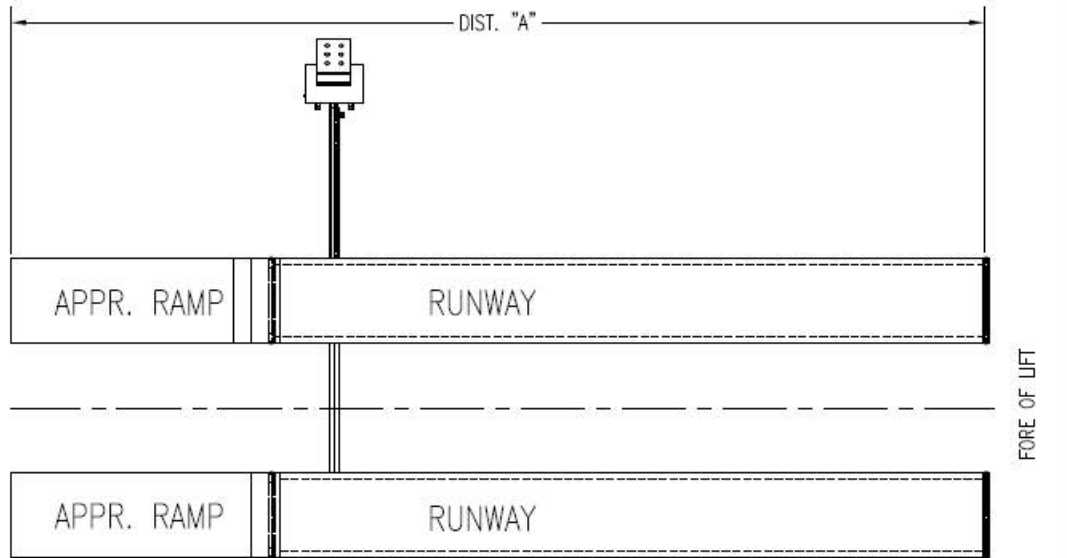
SPEED OF RISE 72 SEC.  
 RUNWAY WIDTH 30-1/2"  
 RUNWAY HEIGHT 8-1/4" DIST. "A"

RUNWAYS LENGTH	MODEL	LONG	DIST. "A"
	MODEL: PKSC30-17	17' LONG	299"
	MODEL: PKSC30-18	18' LONG	311"
	MODEL: PKSC30-19	19' LONG	323"
	MODEL: PKSC30-20	20' LONG	335"
	MODEL: PKSC30-21	21' LONG	347"
	MODEL: PKSC30-22	22' LONG	359"
	MODEL: PKSC30-23	23' LONG	371"
	MODEL: PKSC30-24	24' LONG	383"
	MODEL: PKSC30-25	25' LONG	395"
	MODEL: PKSC30-26	26' LONG	407"
	MODEL: PKSC30-27	27' LONG	419"
	MODEL: PKSC30-28	28' LONG	422"
	MODEL: PKSC30-29	29' LONG	434"
	MODEL: PKSC30-30	30' LONG	446"

OVERALL LIFTING HEIGHT 5'-8 3/4"  
 OVERALL WIDTH 109"  
 OPTIONAL - ROLLING JACKING BEAM



FLOOR REQUIREMENTS: 3,000 PSI,  
 6" MIN. THICK REINFORCED CONCRETE.



DWN.	JK	TITLE	SCISSOR LIFT MODEL SC30	NOTES	SC30
APPR.	KK		MAY 04/2017	DWG	SC30-FIG.01 A